

## Thank you for your support of the Pav YMCA!

To recognize your generous gift, the Pav YMCA will place an 18x18 inch sign within our building. This sign is printed on 3mm sintra board (a durable, lightweight, moisture resistance board) with a white background.

You have the option to choose your signs color palette, benefit statement, contact information, image and sponsor logo.

If you have any questions about your sign, contact Andrea at 708.749.0606 ext. 23 or news@pavymca.org.

Please return this form within one week to ensure your sign is displayed in a timely manner!



### 1. COLOR PALETTE

The benefit statement will be the colors of lines 1, 2, and 3. The Pav YMCA will pick from the chosen color palette if the statement is less than three lines long. "Annual Support Campaign" and "Pav YMCA" will be printed in the accent color.

List your choice of color palette here: \_\_\_\_\_

A. Green/Blue

B. Orange/Green

C. Blue/Purple

D. Purple/Red

E. Red/Orange



LINE 1

LINE 2

LINE 3

ACCENT COLOR

LINE 1

LINE 2

LINE 3

ACCENT COLOR

LINE 1

LINE 2

LINE 3

ACCENT COLOR

LINE 1

LINE 2

LINE 3

ACCENT COLOR

LINE 1

LINE 2

LINE 3

ACCENT COLOR

### 2. BENEFIT STATEMENT

The benefit statement is simple and bold and speaks to the benefits the Y brings to individuals and the community. All letters are capitalized with no more than 15 characters per line. The benefit statement cannot be a company slogan or motto.

List your choice of benefit statement here: \_\_\_\_\_

A. CHANGING THE FUTURE

B. ENDLESS POSSIBILITIES

C. BUILDING OUR COMMUNITY TOGETHER

D. STRENGTHENING OUR COMMUNITY

E. MAKING AN IMPACT

F. SUPPORTING OUR NEIGHBORS

G. List your own (subject to Pav YMCA approval): \_\_\_\_\_

### 3. CONTACT INFORMATION

The first line will identify you as a community partner of the Y. Your company name will be listed on the second line. You have up to three additional lines to be used as contact information as you see fit. All text in this area will be in gray. Please print clearly.

Company Name: \_\_\_\_\_

Line 1: \_\_\_\_\_

Line 2: \_\_\_\_\_

Line 3: \_\_\_\_\_

### 4. IMAGE

The Pav YMCA will chose an image that matches your color palette. You have the option to pick the age demographics of your image. The image may feature an individual or group.

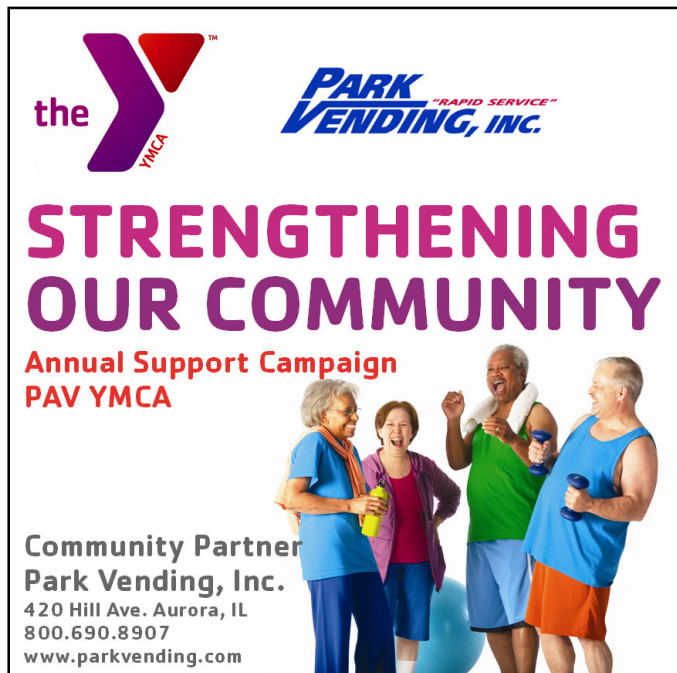
List your choice of image here: \_\_\_\_\_

- A. Youth Only
- B. Adults Only
- C. Family (Youth & Adults)
- D. Seniors Only
- E. No preference

### 5. COMPANY LOGO

Your company logo will be placed in a prominent position at the top of the sign. Email a high quality image to [news@pavymca.org](mailto:news@pavymca.org). We accept the following image formats: .emf, .wmf, .jpg, .jpeg, .jfif, .jpe, .png, .bmp, .dib, .rle, .bmz, .gif, .gfa, .emz, .wmz, .pcz, .tiff, .cdr, .cgm, .eps, .pct, .pict, .wpg, .pdf.

### EXAMPLES



**Thank you again for your generosity. Your gift will have a meaningful, enduring impact right in your own neighborhood for many years.**